

# Mouse Hepatocellular carcinoma- associated protein TD26, TD26ELISA Kit

96 Tests

Operating instruction

**FOR RESEARCH USE ONLY; NOT FOR THERAPEUTIC OR DIAGNOSTIC APPLICATIONS! PLEASE READ THROUGH ENTIRE PROCEDURE BEFORE BEGINNING!**

## Synonyms

Hepatocellular carcinoma-associated protein TD26, C19orf80, hepatocellular carcinoma-associated protein TD26; ANGPTL8; PRO1185; PVPA599; RIFL; TD26; hepatocellular carcinoma-associated gene TD26; lipasin; chromosome 19 open reading frame 80

## Search name

**Mouse Hepatocellular carcinoma-associated protein TD26, TD26 ELISA Kit, Mouse TD26 ELISA Kit, Mouse C19orf80 ELISA Kit, Mouse ANGPTL8 ELISA Kit, Mouse PRO1185 ELISA Kit, Mouse PVPA599 ELISA Kit, Mouse RIFL ELISA Kit, Mouse hepatocellular carcinoma-associated gene TD26 ELISA Kit, Mouse lipasin; chromosome 19 open reading frame 80 ELISA Kit**

## Intended use

This immunoassay kit allows for the in vitro quantitative determination of mouse Hepatocellular carcinoma-associated protein TD26 homolog concentrations in serum, Plasma, tissue homogenates and Cell culture supernates and Other biological fluids.

## Test principle

The microtiter plate provided in this kit has been pre-coated with an antibody specific to Hepatocellular carcinoma-associated protein TD26 homolog. Standards or samples are then added to the appropriate microtiter plate wells with a biotin-conjugated polyclonal antibody preparation specific for Hepatocellular carcinoma-associated protein TD26 homolog and Avidin conjugated to Horseradish Peroxidase (HRP) is added to each microplate well and incubated. Then a TMB substrate solution is added to each well. Only those wells that contain Hepatocellular carcinoma-associated protein TD26 homolog, biotin-conjugated antibody and enzyme-conjugated Avidin will exhibit a change in color. The enzyme-substrate reaction is terminated by the addition of a sulphuric acid solution and the color change is measured spectrophotometrically at a wavelength of 450 nm  $\pm$  2 nm. The concentration of Hepatocellular carcinoma-associated protein TD26 homolog in the samples is then determined by comparing the O.D. of the samples to the standard curve.

## Materials and components

Reagent	Quantity
Assay plate	1
Standard	2
Sample Diluent	1 $\times$ 20ml
Assay Diluent A	1 $\times$ 10ml
Assay Diluent B	1 $\times$ 10ml
Detection Reagent A	1 $\times$ 120 $\mu$ l
Detection Reagent B	1 $\times$ 120 $\mu$ l
Wash Buffer(25 x concentrate)	1 $\times$ 30ml
Substrate	1 $\times$ 10ml
Stop Solution	1 $\times$ 10ml
Plate sealer for 96 wells	5
Instruction	1

## Other supplies required

Microplate reader.  
Pipettes and pipette tips.  
EP tube  
Deionized or distilled water.

## Storage of the kits

The **Assay Plate, Standard, Detection Reagent A and Detection Reagent B** should be stored at -20 $^{\circ}$ C upon being received. After receiving the kit, **Substrate should be always stored at 4 $^{\circ}$ C**. Other reagents are kept according to the labels on vials. But for long term storage, please keep the whole kit at -20 $^{\circ}$ C (Except the substrate). The unused strips should be kept in a sealed bag with the desiccant provided to minimize exposure to damp air. The test kit may be used throughout the expiration date of the kit (six months from the date of manufacture). Opened test kits will remain stable until the expiring date shown, provided it is stored as prescribed above.

**Note:** Because of the inherent stability of lyophilized material, Nova lifetech may ship these materials at ambient temperature.

## Sample collection and storage

**Serum** - Use a serum separator tube (SST) and allow samples to clot for 30 minutes before centrifugation for 15 minutes at approximately 1000  $\times$  g. Remove serum and assay immediately or aliquot and store samples at -20 $^{\circ}$ C or -80 $^{\circ}$ C.

**Plasma** - Collect plasma using EDTA or heparin as an anticoagulant. Centrifuge samples for 15 minutes at 1000 × g at 2°C - 8°C within 30 minutes of collection. Store samples at -20°C or -80°C. Avoid repeated freeze-thaw cycles.

**Tissue homogenates** - The preparation of tissue homogenates will vary depending upon tissue type. For this assay, tissue was rinsed with 1X PBS to remove excess blood, homogenized in 20 mL of 1X PBS and stored overnight at ≤ -20°C. After two freeze-thaw cycles were performed to break the cell membranes, the homogenates were centrifuged for 5 minutes at 5000 x g. Remove the supernate and assay immediately or aliquot and store at ≤ -20°C.

**Cell culture supernates and Other biological fluids** - Remove particulates by centrifugation and assay immediately or aliquot and store samples at -20°C or -80°C. Avoid repeated freeze-thaw cycles.

**Note:**

1. Samples to be used within 5 days may be stored at 2-8°C, otherwise samples must be stored at -20°C (1 month) or -80°C (2 months) to avoid loss of bioactivity and contamination.
2. Tissue or cell extraction samples prepared by chemical lysis buffer may cause unexpected ELISA results due to the impacts of certain chemicals.
3. Influenced by the factors including cell viability, cell number and also sampling time, samples from cell culture supernatant may not be detected by the kit
4. Sample hemolysis will influence the result, so hemolytic specimen can not be detected.
5. When performing the assay slowly bring samples to room temperature.

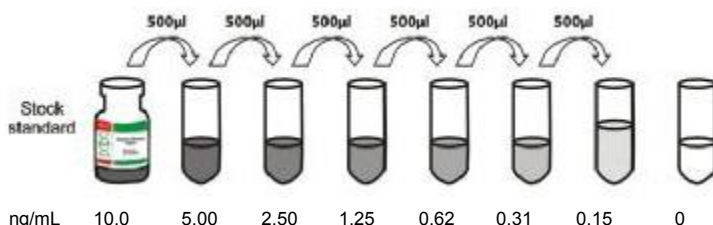
**Limitations of the procedure**

1. Nova Lifetech is only responsible for the kit itself, but not for the samples consumed during the assay. The user should calculate the possible amount of the samples used in the whole test. Please reserve sufficient samples in advance.
2. The kit should not be used beyond the expiration date on the kit label.
3. Do not mix or substitute reagents with those from other lots or sources.
4. If samples generate values higher than the highest standard, further dilute the samples with the Sample Diluent and repeat the assay. Any variation in standard diluent, operator, pipetting technique, washing technique, incubation time or temperature, and kit age can cause variation in binding.

**Reagent preparation**

**Wash Buffer** - If crystals have formed in the concentrate, warm to room temperature and mix gently until the crystals have completely dissolved. Dilute 30 mL of Wash Buffer Concentrate into deionized or distilled water to prepare 750 mL of Wash Buffer.

**Standard** - Reconstitute the Standard with 2.0 mL of Sample Diluent. This reconstitution produces a stock solution of 10.0 ng/mL. Allow the standard to sit for a minimum of 15 minutes with gentle agitation prior to making serial dilutions (Making serial dilution in the wells directly is not permitted). The undiluted standard serves as the high standard (10.0 ng/mL). The Sample Diluent serves as the zero standard (0 ng/mL).



**Detection Reagent A and B** - Dilute to the working concentration using Assay Diluent A and B (1:100), respectively.

**Assay procedure**

Allow all reagents to reach room temperature (Please do not dissolve the reagents at 37°C directly.). **All the reagents should be mixed thoroughly by gently swirling before pipetting. Avoid foaming.** Keep appropriate numbers of strips for 1 experiment and remove extra strips from microtiter plate. Removed strips should be resealed and stored at 4°C until the kits expiry date. Prepare all reagents, working standards and samples as directed in the previous sections. Please predict the concentration before assaying. If values for these are not within the range of the standard curve, users must determine the optimal sample dilutions for their particular experiments.

1. Add 100 µl of **Standard**, Blank, or Sample per well. Cover with the Plate sealer. Incubate for 2 hours at 37°C.
2. Remove the liquid of each well, don't wash. Add 100 µl of **Detection Reagent A** working solution to each well. Cover with the Plate sealer. Incubate for 1 hour at 37°C. Detection Reagent A working solution may appear cloudy. Warm to room temperature and mix gently until solution appears uniform.
3. Aspirate each well and wash, repeating the process three times for a total of three washes. Wash by filling each well with Wash Buffer (approximately 400 µl) using a squirt bottle, multi-channel pipette, manifold dispenser or autowasher. and let it sit for 1~2 minutes. Complete removal of liquid at each step is essential to good performance. After the last wash, remove any remaining Wash Buffer by aspirating or decanting. Invert the plate and blot it against clean paper towels.
4. Add 100 µl of **Detection Reagent B** working solution to each well. Cover with a new Plate sealer. Incubate for 1 hour at 37°C.
5. Repeat the aspiration/wash process for 5 times as conducted in step 3..
6. Add 90 µl of **Substrate Solution** to each well. Cover with a new Plate sealer. Incubate within **15-30 minutes** at 37°C. Protect from light.
7. Add 50 µl of **Stop Solution** to each well. If color change does not appear uniform, gently tap the plate to ensure thorough mixing.

- Determine the optical density of each well at once, using a microplate reader set to 450 nm.

**Note:**

- Absorbance is a function of the incubation time. Therefore, prior to starting the assay it is recommended that all reagents should be freshly prepared prior to use and all required strip-wells are secured in the microtiter frame. This will ensure equal elapsed time for each pipetting step, without interruption.
- Please carefully reconstitute Standards or working Detection Reagent A and B according to the instruction, and avoid foaming and mix gently until the crystals have completely dissolved. **The reconstituted Standards Detection Reagent A and B can be used only once.** This assay requires pipetting of small volumes. To minimize imprecision caused by pipetting, ensure that pipettors are calibrated. It is recommended to suck more than 10 $\mu$ l for once pipetting.
- To ensure accurate results, proper adhesion of plate sealers during incubation steps is necessary. Do not allow wells to sit uncovered for extended periods between incubation steps. Once reagents have been added to the well strips, DO NOT let the strips DRY at any time during the assay.
- For each step in the procedure, total dispensing time for addition of reagents to the assay plate should not exceed 10 minutes.
- To avoid cross-contamination, change pipette tips between additions of each standard level, between sample additions, and between reagent additions. Also, use separate reservoirs for each reagent.
- The wash procedure is critical. Insufficient washing will result in poor precision and falsely elevated absorbance readings.
- Duplication of all standards and specimens, although not required, is recommended.
- Substrate Solution is easily contaminated. Please protect it from light.
- The web version of manual is only for reference, subject to the instruction shipping with the kit.

**Specificity**

This assay recognizes recombinant and natural mouse Hepatocellular carcinoma-associated protein TD26 homolog. No significant cross-reactivity or interference was observed.

**Note:**

Limited by current skills and knowledge, it is impossible for us to complete the cross-reactivity detection between mouse Hepatocellular carcinoma-associated protein TD26 homolog and all the analogues, therefore, cross reaction may still exist.

**Detection Range**

0.15 ng/mL -10.0 ng/mL.

**Calculation of results**

Average the duplicate readings for each standard, control, and sample and subtract the average zero standard optical density. Create a standard curve by reducing the data using computer software capable of generating a four parameter logistic (4-PL) curve-fit. As an alternative, construct a standard curve by plotting the mean absorbance for each standard on the x-axis against the concentration on the y-axis and draw a best fit curve through the points on the graph. The data may be linearized by plotting the log of the Hepatocellular carcinoma-associated protein TD26 homolog concentrations versus the log of the O.D. and the best fit line can be determined by regression analysis. It is recommended to use some related software to do this calculation, such as curve expert 1.3. This procedure will produce an adequate but less precise fit of the data. If samples have been diluted, the concentration read from the standard curve must be multiplied by the dilution factor.

**Important note:**

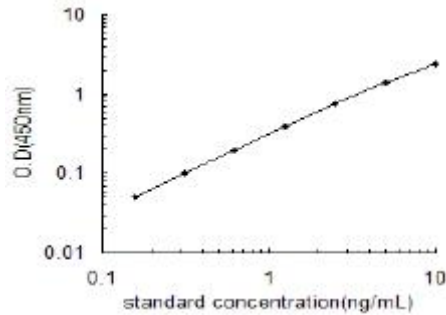
- Limited by the current condition and scientific technology, we can't completely conduct the comprehensive identification and analysis on the raw material provided by suppliers. So there might be some qualitative and technical risks to use the kit
- The final experimental results will be closely related to validity of the products, operation skills of the end users and the experimental environments. Please make sure that sufficient samples are available.
- Kits from different batches may be a little different in detection range, sensitivity and color developing time. Please perform the experiment exactly according to the instruction attached in kit while electronic ones from our website is only for information.
- There may be some foggy substance in the wells when the plate is opened at the first time. It will not have any effect on the final assay results.
- Do not remove microtiter plate from the storage bag until needed.
- A microtiter plate reader with a bandwidth of 10nm or less and an optical density range of 0-3 OD or greater at 450nm wavelength is acceptable for use in absorbance measurement.
- Use fresh disposable pipette tips for each transfer to avoid contamination.
- Do not substitute reagents from one kit lot to another. Use only the reagents supplied by manufacturer.
- Even the same operator might get different results in two separate experiments. In order to get better reproducible results, the operation of every step in the assay should be controlled. Furthermore, a preliminary experiment before assay for each batch is recommended.
- Each kit has been strictly passed Q.C test. However, results from end users might be inconsistent with our in-house data due to some unexpected transportation conditions or different lab equipments. Intra-assay variance among kits from different batches might arise from above factors, too.
- Kits from different manufacturers for the same item might produce different results, since we haven't compared our products with other manufacturers.
- The instruction manual also suit for the kit of 48T, but all reagents of 48T kit is reduced by half.
- Valid period: six months.

### Precaution

The Stop Solution suggested for use with this kit is an acid solution. Wear eye, hand, face, and clothing protection when using this material.

### TYPICAL DATA

This graph data is shown as an example. A standard curve must be generated **each time** the assay is run.



## 小鼠肝细胞癌结合蛋白 TD26 同系物(Hepatocellular carcinoma-associated protein TD26 homolog) 酶联免疫分析测定试剂盒使用说明书

产品编号: E11644m

Nova lifetech®  
www.Nova lifetech.cn

本试剂盒仅供体外研究使用!

### 预期应用

ELISA 法定量测定待测物种血清、血浆、组织匀浆、细胞培养物上清或其它相关液体中 Hepatocellular carcinoma-associated protein TD26 homolog 含量。

### 实验原理

本试剂盒应用双抗体夹心酶标免疫分析法测定标本中 Hepatocellular carcinoma-associated protein TD26 homolog 水平。用纯化的抗体包被微孔板，制成固相抗体，往包被有固相抗体的微孔中依次加入标准品或受检样本、生物素化的 Hepatocellular carcinoma-associated protein TD26 homolog 抗体、HRP 标记的亲合素，经过彻底洗涤后用底物 TMB 显色。TMB 在过氧化物酶的催化下转化成蓝色，并在酸的作用下转化成最终的黄色。颜色的深浅和样品中的 Hepatocellular carcinoma-associated protein TD26 homolog 呈正相关。用酶标仪在 450 ±2 nm 波长下测定吸光度 (OD 值)，计算样品浓度。

### 试剂盒组成及试剂配制

1. **酶标板**: 一块 (12×8=96 孔)，实验时请按照图示添加标准品和待测样品(板子可拆卸，可以多次实验)。

	1	2	3	4	5	6	7	8	9	10	11	12
A	A	A	S	S	S	S	S	S	S	S	S	S
B	B	B	S	S	S	S	S	S	S	S	S	S
C	C	C	S	S	S	S	S	S	S	S	S	S
D	D	D	S	S	S	S	S	S	S	S	S	S
E	E	E	S	S	S	S	S	S	S	S	S	S
F	F	F	S	S	S	S	S	S	S	S	S	S
G	G	G	S	S	S	S	S	S	S	S	S	S
H	H	H	S	S	S	S	S	S	S	S	S	S

A-H=Standards S=Samples

- 标准品** (冻干品): 2 瓶，每瓶临用前以样品稀释液稀释至 2.0 ml，盖好后静置 10 分钟以上，然后反复颠倒/搓动以助溶解，其浓度为 10.0 ng/mL，做系列倍比稀释后，分别稀释成 5.00 ng/mL，2.50 ng/mL，1.25 ng/mL，0.62 ng/mL，0.31 ng/mL，0.15 ng/mL，其原液直接作为最高标准浓度，样品稀释液直接作为标准浓度 0 ng/mL，临用前 15 分钟内配制。如配制 5.00 ng/mL 标准品: 取 0.5ml 10.0 ng/mL 的上述标准品加入含有 0.5ml 样品稀释液的 Eppendorf 管中，混匀即可，其余浓度以此类推。
- 样品稀释液**: 1×20ml/瓶。