

ALDH1A1 antibody

Product Information

Product Name:	ALDH1A1 antibody
Catalog No.:	PAab00282
Size:	100ug
Form:	liquid
Purification:	Immunogen affinity purified
Purity:	≥95% as determined by SDS-PAGE
Host:	Rabbit
IsoType:	IgG
Storage:	PBS with 0.02% sodium azide and 50% glycerol pH 7.3 , -20Centigrade for 24 months (Avoid repeated freeze / thaw cycles.)

Background

ALDH1A1(Aldehyde dehydrogenase family 1 member A1), also named as ALDC, ALDH1 and PUMB1, belongs to the aldehyde dehydrogenase family. The ALDH1A1 gene encodes a liver cytosolic isoform of acetaldehyde dehydrogenase, an enzyme involved in the major pathway of alcohol metabolism after alcohol dehydrogenase. ALDH1A1 plays a critical role in protection against oxidative stress-induced cytotoxicity in lens epithelial cells(PMID:19296407). And it is important for multiple biological activities including drug resistance, cell differentiation, and oxidative stress response(PMID:19025616). As a novel cancer stem cell marker, ALDH1A1 can be used for tumors whose corresponding normal tissues express ALDH1 in relatively restricted or limited levels such as breast, lung, ovarian or colon cancer(PMID: 20422001). This antibody can also recognize some other membranes of the aldehyde dehydrogenase family.

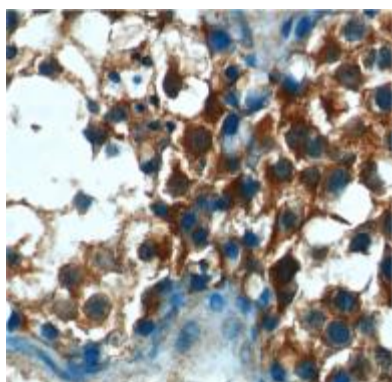
Immunogen information

Immunogen:	Aldehyde dehydrogenase family 1 member A1
Synonyms:	ALDC, ALDH E1, ALDH1, ALDH11, ALDH1A1, ALHDII, PUMB1, RALDH 1, RALDH1, Retinal dehydrogenase 1
Calculated MW:	55 kDa
Uniprot ID :	P00352

Application

Specificity:	Human, Mouse,Rat; other species are not tested. Please decide the specificity by homology
Tested Application:	WB, IHC
Recommended dilution:	WB : 1:1000-1:4000 IHC : 1:100-1:400

Image:



Immunohistochemical analysis of paraffin-embedded human testis tissue slide using ALDH1A1 Antibody at dilution of 1:200

***Product is for Research use only!!!**